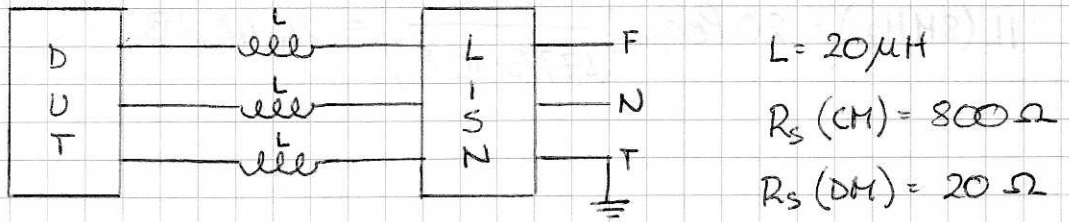


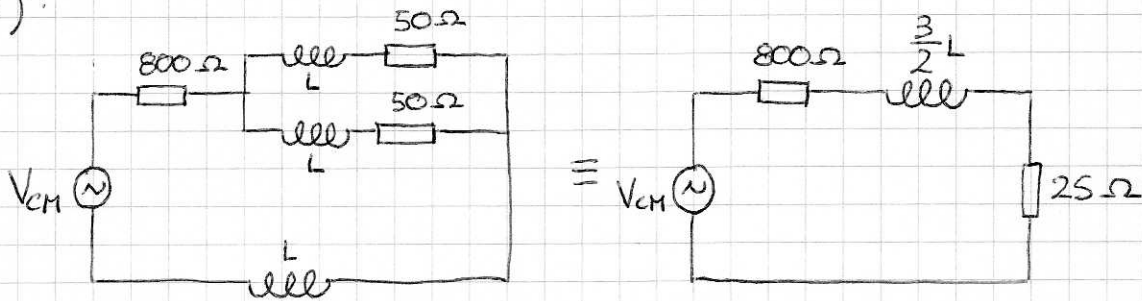
Emissioni condotte-es 5

Sia dato il seguente filtro per emissioni condotte:

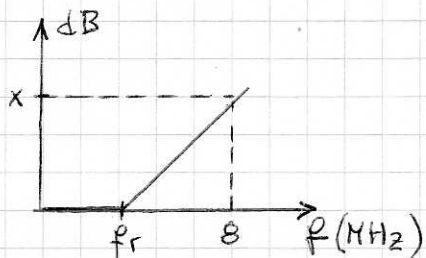


Determinare, per i disturbi CM e DM, l'insertion Loss del filtro, a 8 MHz.

CM):



IL:



$$X = 20 \log\left(\frac{8 \cdot 10^6}{f_T}\right)$$

$$f_T = \frac{25 + 800}{2\pi \cdot \frac{3}{2} \cdot 20 \cdot 10^{-6}} = 4,377 \text{ MHz} \Rightarrow X = 5,239 \text{ dB} = \text{IL}(8 \text{ MHz})$$

DM.)

